

Holiday Inn Northampton



[View the Access Guide](#)

Bedford Road, Northampton NN4 7YF

01604 622 777

www.ihg.com/holidayinn/hotels/gb/en/northampton/ormuk/hoteldetail (<https://www.ihg.com/holidayinn/hotels/gb/en/northampton/ormuk/hoteldetail>)

Guide Last Updated: 13/02/2018

[Something changed? \(/contact/something_changed?destination=/access-guide/kew-green/holiday-inn-northampton\)](/contact/something_changed?destination=/access-guide/kew-green/holiday-inn-northampton)



Google

(<https://maps.google.com/maps?ll=52.229985,-0.863729&z=14&t=m&hl=en-US&gl=US&mapclient=api3>)

Map data ©2018 Google

Access Guide



[Explain these icons \(/our-icons\)](#)

[Expand all](#) [Collapse all](#)

Hotel Introduction

[Collapse -](#)

Hotel Information

[Collapse -](#)

- The hotel has its own parking facilities.
- This hotel has its own restaurant located on the ground floor.
- Conference/meeting facilities are available.
- The conference/meeting facilities are located on the ground floor.

Room Information

[Collapse -](#)

- The hotel has 105 rooms in total.
- There is an/are accessible room(s) within the hotel.
- The accessible room(s) is/are located on the ground floor, in the rear corridor as you enter through the side entrance.
- The hotel has 2 accessible room(s) with accessible ensuite facilities.
- There is/are 2 accessible room(s) with a wet room/wheel in shower.
- There is an/are adjoining room(s) available for the accessible room(s).

- The accessible rooms are 52m - 58m from the hotel side entrance.
- There is a/are standard room(s) available on the ground floor.
- There is an/are adjoining room(s) available for the standard room(s).
- Rooms on other floors are accessed via stairs or lift.
- Bed raisers are not available on request.
- All televisions have subtitles available.

Getting Here

Collapse -

By Road

Collapse -

- This hotel is located on the outskirts of Northampton, on the A428.
- The hotel has its own parking facilities.

By Bus

Collapse -

- There is a bus stop within 150 metres of the hotel.
- The nearest bus stop is located on the opposite side of the A428, approximately 200 metres from the hotel.
- [For more information on Northamptonshire Buses please click here \(opens new tab\) \(https://bustimes.org.uk/operators/stagecoach-northamptonshire\).](https://bustimes.org.uk/operators/stagecoach-northamptonshire)

By Train

Collapse -

- The nearest Railway Station is Northampton.
- Northampton Station is situated in the centre of Northampton, located approximately 2.6 miles from the hotel. There are bus and taxi routes to the hotel from the station.
- [For more information on Northampton Rail please click here \(opens new tab\) \(http://www.nationalrail.co.uk/stations_destinations/NMP.aspx\).](http://www.nationalrail.co.uk/stations_destinations/NMP.aspx)

Getting Help and Assistance

Collapse -

- There is a member of staff available for help and assistance.
- Staff receive disability awareness/equality training.
- Staff receive deaf awareness training.
- There is not a member of staff trained in British Sign Language.
- British Sign Language interpreters cannot be provided on request.
- The alternative formats documents can be provided in include; large print on request.
- There is an assistance dog toilet or toileting area at the venue/near by.
- The assistance dog toilet or toileting area is located on the grass areas outside the hotel.
- Water bowls for assistance dogs are available.
- There are mobility aids available.
- The mobility aids available include wheelchairs and shower chairs.
- To obtain mobility aids please contact reception.

Parking

Collapse -

Parking

Collapse -

- The hotel does have its own parking facilities.
- The car park is located at the rear of the hotel.

- The car park type is open air/surface.
- The car park does not have a height restriction barrier.
- The car park does not have a barrier control system.
- The car park surface is tarmac.
- There is a/are Blue Badge parking bay(s) available.
- The Blue Badge bay(s) is/are clearly marked and signposted.
- There is/are 2 designated Blue Badge parking bay(s) within the car park.
- The dimensions of the designated Blue Badge parking bay(s) surveyed are 518cm x 310cm (16ft 12in x 10ft 2in).
- There is not a 120cm hatched zone around the Blue Badge parking bay(s).
- Parking spaces for Blue Badge holders do not need to be booked in advance.
- Clearly marked/signposted parent and child parking bays are not available.
- All parking spaces are provided on a first come first served basis.

Paying

Collapse -

- There are not parking charges for the car park.

Access from the Car Park

Collapse -

- The route from the car park to the entrance is accessible to a wheelchair user with assistance.
- Assistance may be required because there is/are slopes/ramps.
- The entrance is not clearly visible from the car park.
- The route from the car park to the entrance is not clearly signposted.
- The surface on the approach to the entrance is block paving.
- There is not a road to cross between the car park and the entrance.
- There is no tactile paving on dropped kerbs between the car park and the entrance.
- The nearest designated Blue Badge parking bay is approximately 18m (19yd 2ft) from the hotel main entrance.

Drop-off Point(s)

Collapse -

- There is not a/are not clearly marked drop-off point(s).



1



2



3



4



5



6

Outside Access (Hotel Main Entrance)

Collapse -

Entrance

Collapse -

- This information is for the entrance located at the front of the hotel.

- The entrance area/door is clearly signed.
- There is ramped/sloped or stepped access at this entrance.
- There is a canopy or recess which provides weather protection at this entrance.
- The entrance door(s) does not/do not contrast visually with its immediate surroundings.
- The bell/buzzer is not in a suitable position to allow wheelchair users to gain access.
- The height of the bell/buzzer is 133cm (4ft 4in).
- A key card is required for access at this entrance.
- The height of the key card reader is 78cm.
- The main door(s) open(s) automatically (towards you).
- The main automatic door(s) is/are push pad or push button activated.
- The door(s) is/are double width.
- The width of the door opening is 148cm.
- There is a second set of doors.
- The door(s) open(s) towards you (pull).
- The door(s) is/are double width.
- The door(s) is/are permanently held open.
- The width of the door opening is 141cm.
- There is a member of staff available for assistance at this entrance.

Ramp/Slope

Collapse -

- The ramp/slope is located to the right as you face the entrance.
- The gradient of the ramp/slope is steep.
- The ramp/slope is permanent.
- There is not a level landing at the top of the ramp/slope.
- There is not a/are not handrail(s) at the ramp.
- The width of the ramp/slope is 111cm (3ft 8in).
- The ramp/slope does bypass the step(s).

Step(s)

Collapse -

- The step(s) is/are located in front of the entrance.
- There is/are 3 step(s).
- The step(s) is/are not clearly marked.
- The height of the step(s) is/are between 15cm and 18cm.
- The going of the step(s) is/are between 30cm and 45cm.
- There is a/are handrail(s) at the step(s).
- The handrail(s) is/are on both sides going up.
- Handrails are at the recommended height (90cm-100cm).
- Handrails do cover the flight of stairs throughout its length.
- Handrails are easy to grip.
- Handrails do not extend horizontally beyond the first and last steps.



1



2



3



4



5



6



7



8



9

Outside Access (Hotel Side Entrance)

Collapse -

Entrance

Collapse -

- This information is for the entrance located at the side of the hotel.
- The entrance area/door is clearly signed.
- There is ramped/sloped or stepped access at this entrance.
- There is not a canopy or recess which provides weather protection at this entrance.
- There is a dark mat or floor marking at this entrance that might be perceived as a hole.
- The entrance door(s) does not/do not contrast visually with its immediate surroundings.
- A key card is required for access at this entrance.
- The height of the key card reader is 120cm.
- The main door(s) open(s) towards you (pull).
- The door(s) is/are single width.
- The door(s) is/are heavy.
- The width of the door opening is 94cm.

Ramp/Slope

Collapse -

- The ramp/slope is located to the right as you face the entrance.
- The gradient of the ramp/slope is slight.
- The ramp/slope is permanent.
- There is not a level landing at the top of the ramp/slope.
- There is a/are handrail(s) at the ramp.
- The handrail(s) is/are on both sides going up.
- The width of the ramp/slope is 124cm (4ft 1in).
- The ramp/slope does bypass the step(s).

Step(s)

Collapse -

- The step(s) is/are located in front of the entrance.
- There is/are 6 step(s).
- The step(s) is/are not clearly marked.
- The height of the step(s) is/are between 15cm and 18cm.
- The going of the step(s) is/are between 30cm and 45cm.
- There is a/are handrail(s) at the step(s).
- The handrail(s) is/are on both sides going up.
- Handrails are at the recommended height (90cm-100cm).

- Handrails do cover the flight of stairs throughout its length.
- Handrails are easy to grip.
- Handrails do not extend horizontally beyond the first and last steps.



1



2



3



4



5



6



7



8

Outside Access (Hotel Rear Entrance)

Collapse -

Entrance

Collapse -

- This information is for the entrance located at the rear of the hotel.
- The entrance area/door is not clearly signed.
- There is stepped access at this entrance.
- There is not a canopy or recess which provides weather protection at this entrance.
- The entrance door(s) does not/do not contrast visually with its immediate surroundings.
- A key card is required for access at this entrance.
- The height of the key card reader is 124cm.
- The main door(s) open(s) towards you (pull).
- The door(s) is/are single width.
- The door(s) is/are heavy.
- The width of the door opening is 96cm.

Step(s)

Collapse -

- The step(s) is/are located to the right as you face the entrance.
- There is/are 6 step(s).
- The step(s) is/are clearly marked.
- The height of the step(s) is/are between 15cm and 18cm.
- The going of the step(s) is/are between 30cm and 45cm.
- There is a/are handrail(s) at the step(s).
- The handrail(s) is/are on the left going up.
- Handrails are at the recommended height (90cm-100cm).
- Handrails do cover the flight of stairs throughout its length.
- Handrails are easy to grip.
- Handrails do not extend horizontally beyond the first and last steps.



1



2



3



4

Reception

Collapse -

Reception

Collapse -

- The reception point is located to the right along the main corridor, and then to the left as you enter the lift lobby area.
- The reception point is approximately 53m (57yd 2ft) from the side entrance.
- The reception area/desk is clearly visible from the entrance.
- There is step free access to the reception point.
- There is a clear unobstructed route to the reception point.
- There are no windows, TVs, glazed screens or mirrors behind the reception point which could adversely affect the ability of someone to lip read.
- The reception counter is not placed in front of a background which is patterned.
- The lighting levels at the reception point are good.
- The height of the reception counter is high (110cm+).
- There is sufficient space to write or sign documents on the counter.
- There is a lowered section of the counter.
- The lowered section of the counter is at the recommended height of 76cm.
- There is sufficient space to write or sign documents on the lowered section of the counter.
- There is a clear knee recess beneath the lowered section of the counter.
- The clear knee recess has the recommended dimensions of 70cm (height) x 50cm (depth).
- The counter is staffed.
- Clipboards can be provided to anyone who is unable to use the desk.
- There is not a hearing assistance system at the reception point.
- Signs and universally accepted symbols or pictograms, indicating lifts, stairs, WCs, circulation routes and other parts of the building are not provided in the reception area.
- The type of flooring in the reception area is tiles.

Reception Waiting Area

Collapse -

- There is not a waiting area close to the reception point.



1



2



3



4

Getting Around

Collapse -

Access

Collapse -

- There is step-free access throughout the building via lift(s).

Circulation

Collapse -

- There are doors in corridors/walkways which have to be opened manually.
- The type of flooring in corridors/walkways is carpet and tiles.
- There is some flooring in corridors/walkways which includes patterns or colours which could be confusing or look like steps or holes to some people.
- There is some flooring in corridors/walkways which is shiny and could cause issues with glare or look slippery to some people.
- There is good colour contrast between the walls and floor in the majority of corridors/walkways.
- The lighting levels are varied.
- Access to other floors/levels is via stairs and lift.

Signage

Collapse -

- Wayfinding signage is provided.
- The colour, design and typeface of signs is consistent throughout the building.

Audio

Collapse -

- This venue does play background music in public areas.
- Music is played in reception and the restaurant.
- There is not a hearing assistance system in the public areas of the building.



1



2



3



4



5



6



7

Step(s) (Restaurant/Bar)

Collapse -

- There is a/are step(s) located to the left as you enter via the main entrance.
- The step(s) is/are used to access the restaurant.
- There is/are 3 step(s).
- The step(s) is/are not clearly marked.
- The height of the step(s) is/are between 15cm and 18cm.
- The going of the step(s) is/are not between 30cm and 45cm.
- There is a/are handrail(s) at the step(s).
- The handrail(s) is/are on both sides.
- Handrails are at the recommended height (90cm-100cm).
- Handrails do cover the flight of stairs throughout its length.
- Handrails are easy to grip.
- Handrails do not extend horizontally beyond the first and last steps.
- The lighting levels at the step(s) are good.



1



2

Lift (Restaurant/Bar)

Collapse -

- There is a lift for public use.
- The lift is located on the ground floor, in the main reception lobby area.
- The lift is clearly visible from the entrance.
- The lift is approximately 58m (63yd 1ft) from the side entrance.
- The lift is a platform lift.
- A member of staff does not need to be notified for use of the lift.
- The platform lift accesses a small level change.
- Clear signs indicating the facilities on each floor are not provided on lift lobby landings.
- There is a clear level manoeuvring space of 150cm x 150cm in front of the lift.
- Lift doors do contrast visually with lift lobby walls.
- The external controls for the lift are within 90cm - 110cm from the floor.
- The colour contrast between the external lift controls and the control plate is poor.
- The colour contrast between the external lift control plate and the wall is good.
- The clear door width is 89cm (2ft 11in).
- The dimensions of the lift are 92cm x 140cm (3ft x 4ft 7in).
- There are separate entry and exit doors in the lift.
- There is not a mirror to aid reversing out of the lift.
- There is not a list of floor services available within the lift.
- The lift does not have a visual floor indicator.
- The lift does not have an audible announcer.
- The controls for the lift are not within 90cm - 120cm from the floor.
- The height of the lift controls are 81cm from the floor.
- There is not a hearing loop system.
- The lift does not have Braille markings.
- The lift does have tactile markings.
- The lighting levels in the lift are good.



1



2

Eating and Drinking (Restaurant/Bar)

Collapse -

- The following information is for the restaurant/bar.
- The restaurant/bar is located to the left of the main reception lobby.
- There is step-free access, via lift, to the restaurant/bar.
- Full table service is not available.
- Food and/or drinks are ordered from the service counter.
- Food and/or drinks can be brought to the table.
- The height of the service counter is high (110cm+).
- There is not a lowered section of the counter.

- There is not a hearing assistance system.
- There is step-free access within the restaurant/bar.
- There is ample room for a wheelchair user to manoeuvre.
- This area does play background music.
- The type of flooring in this area is carpet and tiles.
- No tables are permanently fixed.
- No chairs are permanently fixed.
- Some chairs have armrests on both sides.
- The nearest table is approximately 2m from the entrance/opening.
- The nearest table is approximately 3m from the till/counter.
- The distance between the floor and the lowest table is 36cm.
- The distance between the floor and the highest table is 73cm.
- Plastic/takeaway cups are available.
- Plastic/takeaway cutlery is available.
- Drinking straws are available.
- Children are welcomed in the bar area.
- There are hand held menus available.
- Menus are not available in Braille.
- Menus are available in large print.
- Picture menus are not available.
- Menus are clearly written.
- Menus are presented in contrasting colours.
- The type of food served here is hot and cold meals and snacks.
- The lighting levels are varied.



1



2



3



4



5



6



7



8

Conference / Meeting Facilities (Oakham Suite)

Collapse -

- Conference/meeting facilities are available.
- The conference/meeting facilities are located on the ground floor, at the end of the main corridor as you enter via the side entrance.
- There is step free access to the conference/meeting facilities.
- The door opening width(s) is/are 75cm+ for the room(s).
- There is not a hearing assistance system for the room(s).
- There is a/are chair(s) with armrests on both sides within the room(s).
- There is sufficient space for a wheelchair user to manoeuvre within the room(s).
- The lighting levels in the room(s) are good.



1



2



3



4



5

Fitness Suite

Collapse -

Access to Fitness Suite

Collapse -

- The fitness suite is located on the ground floor, in the rear left corridor.
- The fitness suite is 51m (55yd 2ft) from the side entrance.
- There is level access to the fitness suite.
- There are doors into the fitness suite.
- The doors open away from you (push).
- The doors are single.
- The doors are heavy.
- The opening is 76cm (2ft 6in) wide.

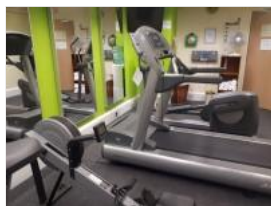
Fitness Suite (General)

Collapse -

- Staff receive no training in assisting disabled people.
- A portable hearing loop is not available for induction.
- There is clear manoeuvring space between equipment.
- There is level access to all of the equipment.



1



2



3



4

Accessible Room(s) (Rooms 11 and 19)

Collapse -

Accessible Room Information

Collapse -

- The details in this section relates to the accessible room(s) with a wet room/wheel in shower.
- This type of accessible room is located on the ground floor, in the rear left corridor.
- There is step-free access to this type of accessible room.
- Accessible rooms of this type have specifications that may vary.
- The ensuite transfer space for the accessible rooms varies from left to right.

- Guests do not need to open a door between the entrance and the room(s).
- The narrowest width of the corridor leading to the room surveyed was 144cm.

Bedroom Features

Collapse -

- The accessible room surveyed is located on the ground floor, in the rear left corridor.
- The accessible room surveyed at the time of the visit was Room 11.
- There is step-free access to the accessible room surveyed.
- There is Braille and numbered signage on or near the accessible room door.
- The door is manual with a key card lock.
- The fob/card reader height is 108cm.
- The width of the door is 84cm (2ft 9in).
- There are lowered spy holes available.
- The bed type is double.
- The bed height is not adjustable.
- The height of the bed is 60cm (1ft 12in).
- The measurement between the bed base and floor is 6cm (2in).
- The bed is not moveable.
- The room does not have an unobstructed minimum turning space of 150cm x 150cm next to the bed.
- The desk is not height adjustable.
- The desk knee recess has the recommended dimensions of 70cm (height) x 50cm (depth).
- The room surveyed had a desk chair with armrests and an armchair.
- Wardrobes have been adapted to allow use from a seated position.
- Light switches are between 75cm and 120cm (4ft) from floor level.
- Electric sockets are not between 40cm and 100cm (4ft) from floor level.
- The window control type(s) for the room is a/are standard lever(s).
- There is an emergency alarm in the room.
- The emergency pull cord alarm is tied up and out of reach (higher than 10cm (4") from floor).
- The emergency alarm rings to reception.
- There is not a flashing fire alarm beacon within the room.
- The type of flooring is carpet.

Ensuite Facilities

Collapse -

- The ensuite door opens outwards.
- The door weight is heavy.
- The door is locked by a twist lock.
- The width of the door to the ensuite is 78cm (2ft 7in).
- The dimensions of the ensuite are 236cm x 188cm (7ft 9in x 6ft 2in).
- The ensuite does not have an unobstructed minimum turning space of 150cm x 150cm in front of the toilet seat.
- The ensuite has a non-slip floor.
- There is an emergency alarm within the ensuite.
- The emergency pull cord alarm is tied up and out of reach (higher than 10cm (4") from floor).
- The emergency alarm rings to reception.
- There is not a flashing fire alarm beacon within the ensuite.
- Disposal facilities are available.
- There is a/are pedal waste paper bin disposal units.
- There is a mirror.
- The mirror is placed at a lower level or at an angle for ease of use.
- There is not a shelf immediately next to or behind the toilet.
- There is a wash basin.
- The wash basin cannot be reached from seated on the toilet.
- The wash basin is placed higher than 74cm (2ft 5in).
- The height of the wash basin is 77cm.

- There are no vertical wall-mounted grab rails at the wash basin.
- The tap type is lever.
- There is a mixer tap.
- There is a soap dispenser.
- The soap dispenser cannot be reached from seated on the toilet.
- The height of the soap dispenser is 90cm.

Toilet Details

Collapse -

- The height of the toilet seat above floor level is 49cm (1ft 7in).
- There is a lateral transfer space.
- As you face the toilet pan the transfer space is on the right.
- The lateral transfer space is 118cm (3ft 10in).
- There is a flush, however it is not on the transfer side.
- There is not a spatula type lever flush.
- There is a dropdown rail on the transfer side.
- There is a/are wall-mounted grab rail(s) available.
- As you face the toilet, the wall mounted grab rails are on the left.
- There is not a vertical wall-mounted grab rail on the transfer side.
- There is a horizontal wall-mounted grab rail on the opposite side of the seat to the transfer space.
- There is a toilet roll holder.
- The toilet roll holder can be reached from seated on the toilet.
- The toilet roll holder is not placed higher than 100cm (3ft 3in).
- The height of the toilet roll holder is 64cm (2ft 1in).

Shower Details

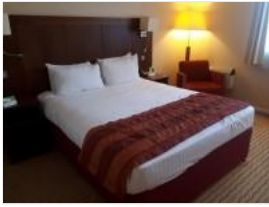
Collapse -

- The ensuite has a wheel in shower.
- The shower head is height adjustable.
- The shower control type is twist/turn.
- A shower chair is available.
- There is a/are wall-mounted grab rail(s) available for the shower.
- Horizontal and/or dropdown rails are available on both sides of the shower seat.
- There is a single vertical grab rail to assist standing users.

Colour Contrast and Lighting

Collapse -

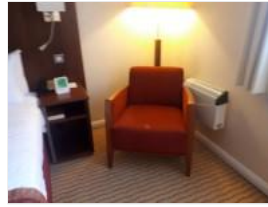
- The colour contrast between the external hotel room door and wall is fair.
- The colour contrast between the internal hotel room door and wall is fair.
- The colour contrast between the hotel room walls and floor is fair.
- The colour contrast between the external ensuite door and wall is poor.
- The colour contrast between the internal ensuite door and wall is poor.
- The colour contrast between the ensuite walls and floor is fair.
- The colour contrast between the drop down rail(s) and wall is fair.
- The colour contrast between the wall-mounted grab rail(s) and wall is fair.
- The colour contrast between the wall-mounted grab rails to the left of the toilet and wall is fair.
- The contrast between the wash basin wall-mounted grab rail(s) and wall is fair.
- The colour contrast between the shower wall-mounted grab rails and wall is fair.
- The toilet seat colour contrast is poor.
- The lighting levels in the room are good.
- The lighting levels in the ensuite are good.



1



2



3



4



5



6



7



8

Other Floors

Collapse -

Stairs

Collapse -

- Stairs can be used to access other floors.
- The stairs are for public use.
- The stairs are located ahead as you enter through the side entrance.
- The stairs are approximately 2m from the side entrance.
- Signs indicating the location of the stairs are not available from the entrance.
- There are manual, heavy, single doors to enter and exit the stairwell on all floors.
- The floors which are accessible by stairs are G, 1 and 2.
- There are 15+ steps between floors.
- The height of the step(s) is/are between the recommended 15cm and 18cm.
- The going of the step(s) is/are between the recommended 30cm and 45cm.
- The steps are not clearly marked.
- There is a/are handrail(s) at the step(s).
- The steps have a handrail on both sides.
- Handrails are at the recommended height (90cm-100cm).
- Handrails do cover the flight of stairs throughout its length.
- Handrails are easy to grip.
- Handrails do not extend horizontally beyond the first and last steps.
- There is a landing.
- Clear signs indicating the facilities on each floor are not provided on landings.
- The lighting levels at the steps are good.



1



2



3

Lift

Collapse -

- There is a lift for public use.
- The lift is located to the rear of reception.
- Signs indicating the location of the lift are not available from the entrance.

- The lift is approximately 52m (56yd 2ft) from the side entrance.
- The lift is a standard lift.
- A member of staff does not need to be notified for use of the lift.
- The floors which are accessible by this lift are G, 1 and 2.
- Clear signs indicating the facilities on each floor are provided on lift lobby landings.
- There is a clear level manoeuvring space of 150cm x 150cm in front of the lift.
- Lift doors do contrast visually with lift lobby walls.
- The external controls for the lift are within 90cm - 110cm from the floor.
- The colour contrast between the external lift controls and the control plate is good.
- The colour contrast between the external lift control plate and the wall is poor.
- The clear door width is 89cm (2ft 11in).
- The dimensions of the lift are 133cm x 139cm (4ft 4in x 4ft 7in).
- There are no separate entry and exit doors in the lift.
- There is a mirror to aid reversing out of the lift.
- There is a list of floor services available within the lift.
- The lift does have a visual floor indicator.
- The lift does not have an audible announcer.
- The controls for the lift are not within 90cm - 120cm from the floor.
- There is not a hearing loop system.
- The lift does not have Braille markings.
- The lift does have tactile markings.
- The lighting levels in the lift are good.
- There is a/are similar lift(s) available.



1



2

Standard Room(s) (Room 102)

Collapse -

Bedroom Features

Collapse -

- The room surveyed is located on the first floor, to the right as you exit the lift.
- The room surveyed at the time of the visit was Room 102.
- There is step-free access to the room surveyed, via lift.
- There is Braille and numbered signage on or near the room door.
- The width of the door is 74cm (2ft 5in).
- The bed type is double.
- The height of the bed is 60cm (1ft 12in).
- The measurement between the bed base and floor is 6cm (2in).
- Light switches are within 120cm (3ft 11in) from floor level.
- There is not an emergency alarm in the room.
- There is not a flashing fire alarm beacon within the room.
- The type of facilities within the ensuite include; a toilet, a wash basin and a shower.
- The ensuite door opens inwards.
- The width of the door to the ensuite is 68cm (2ft 3in).
- There is not an emergency alarm within the ensuite.
- There is not a flashing fire alarm beacon within the ensuite.
- The tap type is lever.
- There is a mixer tap.

Colour Contrast and Lighting

Collapse -

- The colour contrast between the external hotel room door and wall is fair.
- The colour contrast between the internal hotel room door and wall is fair.
- The colour contrast between the hotel room walls and floor is fair.
- The colour contrast between the external ensuite door and wall is poor.
- The colour contrast between the internal ensuite door and wall is poor.
- The colour contrast between the walls and floor in the ensuite is fair.
- The lighting levels in the room are good.
- The lighting levels in the ensuite are good.



1



2



3



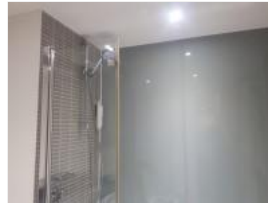
4



5



6



7



8

Standard Room(s) (Suite 120)

Collapse -

Bedroom Features

Collapse -

- The room surveyed is located on the first floor, to the right as you exit the lift.
- The room surveyed at the time of the visit was Room 120.
- There is step-free access to the room surveyed, via lift.
- There is Braille, tactile, written and numbered signage on or near the room door.
- The width of the door is 75cm (2ft 6in).
- The bed type is double.
- The height of the bed is 60cm (1ft 12in).
- The measurement between the bed base and floor is 6cm (2in).
- Light switches are within 120cm (3ft 11in) from floor level.
- There is not an emergency alarm in the room.
- There is not a flashing fire alarm beacon within the room.
- The type of facilities within the ensuite include; a toilet, a wash basin, a bath and a shower.
- The ensuite door opens inwards.
- The width of the door to the ensuite is 66cm (2ft 2in).
- There is not an emergency alarm within the ensuite.
- There is not a flashing fire alarm beacon within the ensuite.
- The tap type is lever.
- There is a mixer tap.

Colour Contrast and Lighting

Collapse -

- The colour contrast between the external hotel room door and wall is fair.
- The colour contrast between the internal hotel room door and wall is fair.

- The colour contrast between the hotel room walls and floor is fair.
- The colour contrast between the external ensuite door and wall is poor.
- The colour contrast between the internal ensuite door and wall is poor.
- The colour contrast between the walls and floor in the ensuite is fair.
- The lighting levels in the room are good.
- The lighting levels in the ensuite are good.



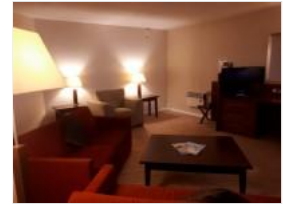
1



2



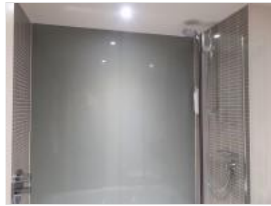
3



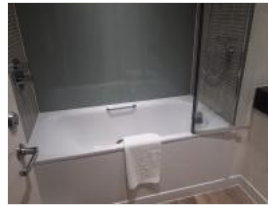
4



5



6



7

Standard Room(s) (Executive Room 122)

Collapse -

Bedroom Features

Collapse -

- The room surveyed is located on the first floor, to the right as you exit the lift.
- The room surveyed at the time of the visit was Room 122.
- There is step-free access to the room surveyed, via lift.
- There is Braille, tactile, written and numbered signage on or near the room door.
- The width of the door is 74cm (2ft 5in).
- The bed type is double.
- The height of the bed is 60cm (1ft 12in).
- The measurement between the bed base and floor is 6cm (2in).
- Light switches are within 120cm (3ft 11in) from floor level.
- There is not an emergency alarm in the room.
- There is not a flashing fire alarm beacon within the room.
- The type of facilities within the ensuite include; a toilet, a wash basin and a shower.
- The ensuite door opens inwards.
- The width of the door to the ensuite is 64cm (2ft 1in).
- There is not an emergency alarm within the ensuite.
- There is not a flashing fire alarm beacon within the ensuite.
- The tap type is lever.
- There is a mixer tap.

Colour Contrast and Lighting

Collapse -

- The colour contrast between the external hotel room door and wall is fair.
- The colour contrast between the internal hotel room door and wall is fair.
- The colour contrast between the hotel room walls and floor is fair.
- The colour contrast between the external ensuite door and wall is poor.
- The colour contrast between the internal ensuite door and wall is poor.
- The colour contrast between the walls and floor in the ensuite is fair.

- The lighting levels in the room are good.
- The lighting levels in the ensuite are good.



1



2



3



4



5



6



7

Accessible Toilet(s)

Collapse -

- There is an/are accessible toilet(s) for public use.

Location and Access

Collapse -

- The accessible toilet surveyed is not for the sole use of disabled people.
- This accessible toilet is located on the ground floor, to the rear left of reception.
- This accessible toilet is approximately 50m (54yd 2ft) from the side entrance.
- There is step-free access to the accessible toilet.

Features and Dimensions

Collapse -

- This is a shared toilet.
- A key is not required for the accessible toilet.
- There is tactile, pictorial and written text signage on or near the toilet door.
- The door opens outwards.
- The door is heavy.
- The door is locked by a twist lock.
- The width of the accessible toilet door is 85cm (2ft 9in).
- The dimensions of the accessible toilet are 165cm x 166cm (5ft 5in x 5ft 5in).
- The accessible toilet does not have an unobstructed minimum turning space of 150cm x 150cm.
- The toilet has not got a non-slip floor.
- There is a lateral transfer space.
- As you face the toilet pan the transfer space is on the left.
- The lateral transfer space is 101cm (3ft 4in).
- There is a flush, however it is not on the transfer side.
- There is not a spatula type lever flush.
- There is a dropdown rail on the transfer side.
- There is an emergency alarm.
- The emergency pull cord alarm is fully functional.
- There is not a flashing fire alarm beacon within the toilet.
- Disposal facilities are available in the toilet.
- There is a/are female sanitary and waste paper pedal bin disposal units.
- There is a/are coat hook(s).
- The height of the coat hook is 112cm from the floor.